

DO SERIES

Models: DO-36, DO-32

DUR-A-LIFT®



DO-32 PICTURED

SPECIFICATIONS

	DO-36	DO-32
WORKING HEIGHT	41'	37'
SIDE REACH	30'4"	26'4"
APPROX. STOWED TRAVEL HEIGHT	9'8"	9'8"
HEIGHT TO BOTTOM OF PLATFORM	36'	32'
BASKET CAPACITY	350#	350#
APPROX. LIFT WEIGHT	2500#	2400#
LOWER BOOM TRAVEL	0° to 100°	0° to 100°
UPPER BOOM TRAVEL	0° to 196°	0° to 196°
INSULATION GAP	12.25'	12'
UPPER BOOM FIBERGLASS LENGTH	15'2"	12'10"

Dur-A-Lift Inc. reserves the right to improve models and change specifications without notice or obligation. Dur-A-Lift equipment meets or exceeds all applicable ANSI Standards as of the date of manufacture.

ARTICULATING OVERCENTER ☐

WORKING HEIGHT UP TO 41' ☐

SIDE REACH TO 30'4" ☐

FIBERGLASS OR ALUMINUM BASKET ☐

INSULATED (DO) OR NON-INSULATED (DOS) ☐

DUR-A-LIFT®
WE SPEAK BUCKET TRUCK

DO SERIES

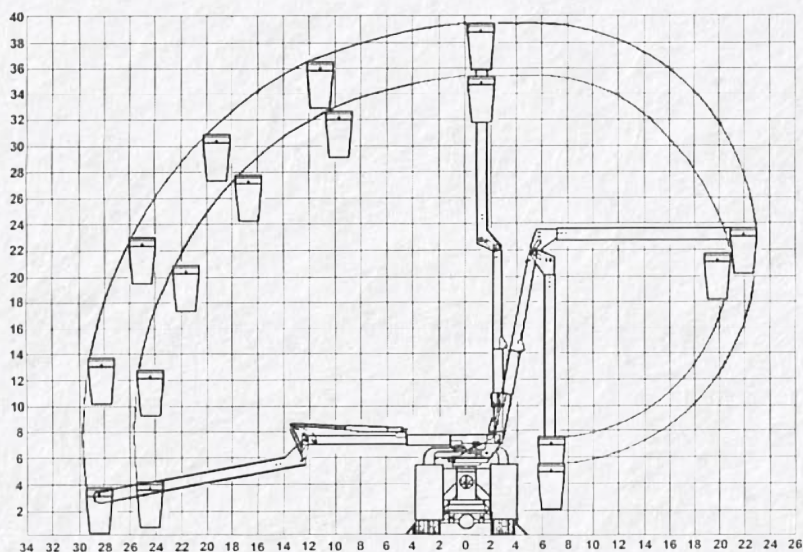
Models: DO-36, DO-32

DUR-A-LIFT®
WE SPEAK BUCKET TRUCK



DO-32

REACH DIAGRAM



CHASSIS REQUIREMENT, MIN.: 15,000 GVWR*
CHASSIS CAB TO AXLE REQUIREMENT, MIN.: 60"

*Minimum GVWR will change significantly depending on make of chassis and stabilizer option.

STANDARD

CONTROLS: Full pressure proportional controls; upper control shut-off provided at the turntable; three control levers at the turntable and basket; deadman at the basket; engine start/stop from the basket.

HYDRAULIC SYSTEM: Open-center system; rated pressure is 2200 PSI; operating pressure is 2000 PSI; 5 to 7 GPM pump flow; 11 gallon oil reservoir.

MECHANICAL SYSTEM: Basket-leveling by glass rods and chain parallelogram system with easy service access; rotation by hydraulically driven spur gear with shear-ball rotation bearing; basket support.

SAFETY FEATURES: Integral holding valves in each cylinder; pressure relief valve; non-conductive hoses and fiberglass rods provide leveling and control through the insulated boom section; upper-boom constructed of fiberglass and rated for work voltages to 46 kv and below; emergency stop system.

OPTIONAL

Continuous rotation; pedestal mounted outriggers; torsion bar; 12v DC full-function backup system; single-hand control lever; basket liner; basket and control cover; hydraulic tool circuit at basket and pedestal; basket tilt system; automatic or two-speed throttle advance; upper-boom electrical test bands; lower-boom fiberglass insert; lower-boom lifting hook.



WWW.DUR-A-LIFT.COM



DO-36 PICTURED

BUILT FOR YOU

Ask about available chassis, body, tailshelf, and basket options.



READ MORE

DUR-A-LIFT, INC., 2002 KINGBIRD AVENUE, PO BOX 31, GEORGE, IOWA 51237
WWW.DUR-A-LIFT.COM | 1-877-4DURALIFT | SALES@DUR-A-LIFT.COM