



DPM2 SERIES

TELESCOPIC ARTICULATING
MATERIAL HANDLING OR PERSONNEL
TOP-MOUNTED JIB AND WINCH!



DPM2-52DU PICTURED

SPECIFICATIONS

	DPM2-52	DPM2-47	DPM2-40	DPM2-38	DPM2-32**
WORKING HEIGHT*	59'	54'	47'	45'	39'
SIDE REACH	31'6"	31'6"	30'3"	28'3"	25'4"
APPROX. STOWED TRAVEL HEIGHT	11'8"	10'5"	10'6"	10'6"	10'8"
HEIGHT TO BOTTOM OF PLATFORM	52'	47'	40'	38'	32'
BASKET CAPACITY (MH, DU)	400#	400#	400#	400#	400#
BASKET CAPACITY NOT USING JIB (DU)	550#	550#	550#	550#	550#
BASKET CAPACITY (DP)	600#	600#	600#	600#	600#
APPROX. LIFT WEIGHT	4400#	4300#	3800#	3800#	3300#
ARTICULATING ARM TRAVEL	0° to 75°	0° to 75°	0° to 83°	0° to 83°	-
MAIN BOOM TRAVEL	-30° to 75°	-30° to 75°	-29° to 70°	-29° to 70°	-15° to 80°
EXTENSION TRAVEL	120"	120"	96"	96"	120"

Dur-A-Lift Inc. reserves the right to improve models and change specifications without notice or obligation. Dur-A-Lift equipment meets or exceeds all applicable ANSI Standards as of the date of manufacture.

*Maximum height achievable with addition of the optional 22" basket elevator.
**Telescopic aerial lift

WORKING HEIGHT UP TO 59'; SIDE REACH TO 31'6"

MATERIAL HANDLING OR DOUBLE-PERSON

180-DEGREE BASKET ROTATOR

BASKET ELEVATOR OPTION

TOP-MOUNTED JIB LIFTS UP TO 1000#

INSULATED (DPM2); NON-INSULATED (DPM2S)



BASKET ELEVATOR

The optional basket elevator allows the operator to raise the basket without repositioning the boom or the jib.

**WE SPEAK
BUCKET TRUCK**

DUR-A-LIFT.COM/GUIDE

BROWSE ALL MODEL OPTIONS ONLINE!



DPM2 SERIES

STANDARD

Proportional controls; lower override controls; engine start/stop from basket; basket access from ground; compensated upper boom; hydraulic basket leveling; rotating basket; continuous rotation; joystick and lockout controls; 180° basket rotator

BASKET CONFIGURATIONS

MH BASKET: Single-person, material handling; top-mounted jib and winch lifts up to 1000#; upper and lower winch control; 400# basket capacity; 24" X 30" fiberglass or aluminum basket

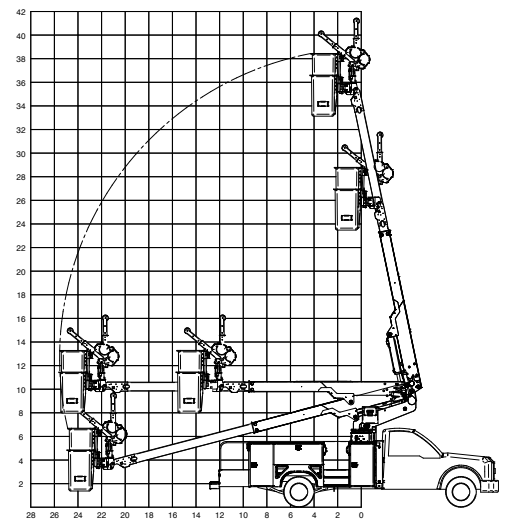
DP BASKET: Double-person, personnel; 600# basket capacity; 24" X 42" fiberglass or aluminum basket

DU BASKET: Dual configuration; double-person, personnel or single-person, material handling; top-mounted jib and winch lifts up to 1000#; 550# basket capacity when not using winch; 400# basket capacity when using winch; 24" X 42" fiberglass or aluminum basket



MH BASKET CONFIGURATION

REACH DIAGRAM DPM2-32



CHASSIS REQUIREMENT, MIN.: 19,000 GVWR
CHASSIS CAB TO AXLE REQUIREMENT, MIN.: 84"



OPTIONAL

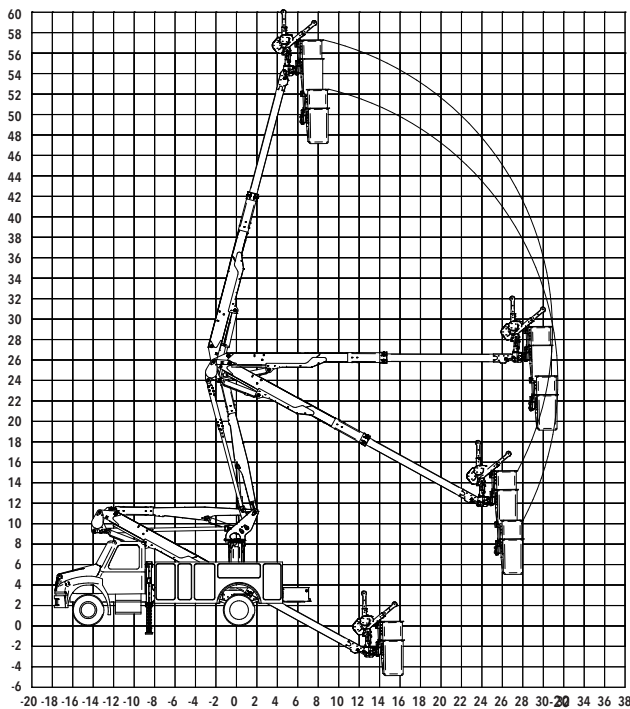
22" basket elevator; high electrical resistant controls; outriggers; basket liner for fiberglass baskets; fiberglass main and articulating booms; tool circuits; D.C. backup system; non-insulated version available (DPM2S); 110 v outlet at basket (DPM2S only)

INSULATED OR NON-INSULATED

Available in insulated (Cat. C or D) or non-insulated formats. Full pressure controls.

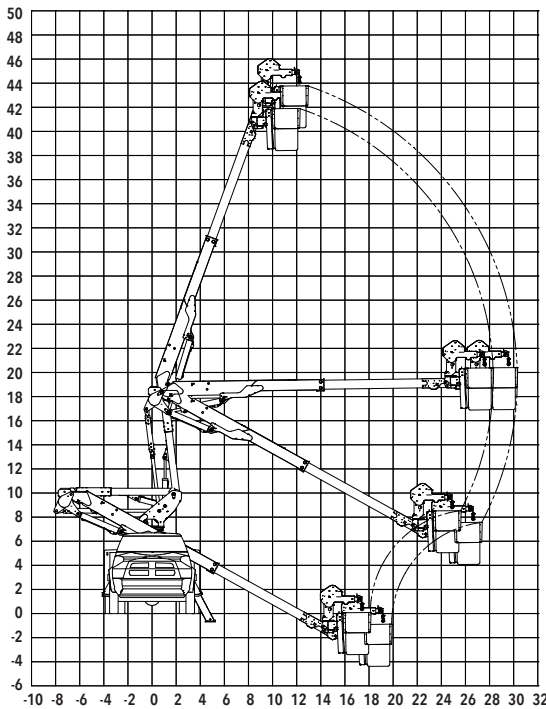
Insulated: DPM2 **Non-insulated:** DPM2S

REACH DIAGRAMS DPM2-47/52



CHASSIS REQUIREMENT, MIN.: 19,500 GVWR (DPM2-47); 22,000 GVWR (DPM2-52)
CHASSIS CAB TO AXLE REQUIREMENT, MIN.: 84" (DPM2-47); 108" (DPM2-52)

REACH DIAGRAMS DPM2-38/40



CHASSIS REQUIREMENT, MIN.: 19,500 GVWR
CHASSIS CAB TO AXLE REQUIREMENT, MIN.: 60" (DPM2-38); 84" (DPM2-40)

JIB & WINCH

The top-mounted jib and winch (DU, MH baskets) allows the operator to rotate the jib to work on either side of the rotating basket.



DUR-A-LIFT, INC., 2002 KINGBIRD AVENUE, PO BOX 31, GEORGE, IOWA 51237
1-877-438-7254 | SALES@DUR-A-LIFT.COM | DUR-A-LIFT.COM