

DPM3 SERIES

Models: DPM3-56, DPM3-51, DPM3-44, DPM3-40

DUR-A-LIFT®



DPM3S-51AW PICTURED

WWW.DUR-A-LIFT.COM

SPECIFICATIONS

	DPM3-56	DPM3-51	DPM3-44	DPM3-40
WORKING HEIGHT	60'8"	56'6"	49'5"	45'7"
SIDE REACH	29'7"	30'6"	31'3"	27'3"
APPROX. STOWED TRAVEL HEIGHT	11'6"	10'5"	10'5"	10'5"
HEIGHT TO BOTTOM OF PLATFORM	55'8"	51'6"	44'5"	40'7"
BASKET CAPACITY, NO JIB (SW)	600#	600#	600#	600#
BASKET CAPACITY, USING JIB (AW)	400#	400#	400#	400#
BASKET CAPACITY, NOT USING JIB (AW)	550#	550#	550#	550#
APPROX. LIFT WEIGHT	4600#	4500#	4200#	4100#
ARTICULATING ARM TRAVEL	0° to 74°	0° to 74°	0° to 81°	0° to 81°
MAIN BOOM TRAVEL	-30° to 75	-30° to 75°	-29° to 75°	-29° to 75°
EXTENSION TRAVEL	120"	120"	120"	96"

Dur-A-Lift Inc. reserves the right to improve models and change specifications without notice or obligation. Dur-A-Lift equipment meets or exceeds all applicable ANSI Standards as of the date of manufacture.

- WORKING HEIGHT UP TO 60'8"
- 36" X 60" ALUMINUM BASKET
- AUXILIARY WINCH LIFTS UP TO 150# (OPTIONAL)
- 180-DEGREE BASKET ROTATOR
- INSULATED (DPM3) OR NON-INSULATED (DPM3S)

BOTTOM MOUNT BASKET STYLE

Up and under access allows you to get into areas you cannot get to with a top-mount basket.



DUR-A-LIFT®

WE SPEAK BUCKET TRUCK

DPM3 SERIES

Models: DPM3-56, DPM3-51, DPM3-44, DPM3-40

DUR-A-LIFT
WE SPEAK BUCKET TRUCK



DPM3-56AW PICTURED



MANY GREAT STORAGE OPTIONS; INCLUDING BULB STORAGE FOR SIGN AND LIGHTING TRUCKS.

+
++
+++

STANDARD

Proportional controls; lower override controls; engine start/stop from basket; basket access from ground; compensated upper boom; hydraulic basket leveling; continuous rotation; joystick and lockout controls; 180° basket rotator

BASKETS

SW BASKET: 600# basket capacity; 36"x60" aluminum basket; no winch.

AW BASKET: 400# basket capacity with jib in use; 550# basket capacity without jib in use; auxiliary winch lifts up to 150 pounds; 36"x60" aluminum basket

OPTIONAL

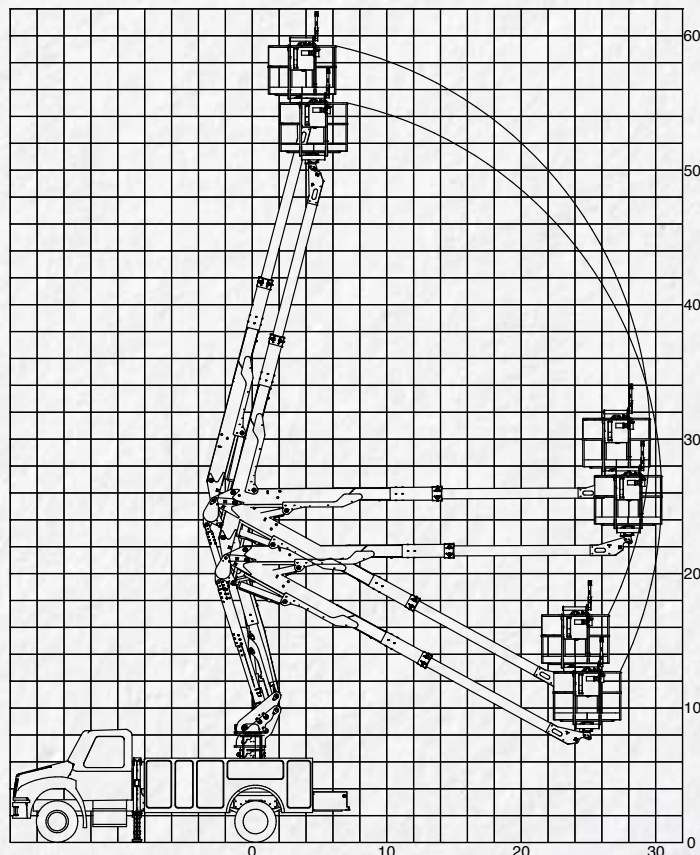
Outriggers; fiberglass main and articulating booms; tool circuits; D.C. backup system; 110 v outlet at basket (non-insulated only)

INSULATED/ NON-INSULATED

The DPM3 series lift is available in insulated or non-insulated formats.

DPM3: insulated (Category D)
DPM3S: non-insulated

REACH DIAGRAM



CHASSIS REQUIREMENT, MIN.: 19,500 GVWR (DPM3-40/44/51); 22,500 GVWR (DPM3-56)
CHASSIS CAB TO AXLE REQUIREMENT, MIN.: 60"-84" (DPM3-40); 84" (DPM3-44/51); 108" (DPM3-56)



DPM3-51AW

BUILT FOR YOU
Ask about available chassis, body, tailshelf, and basket options.



READ MORE

WWW.DUR-A-LIFT.COM

DUR-A-LIFT, INC., 2002 KINGBIRD AVENUE, PO BOX 31, GEORGE, IOWA 51237
WWW.DUR-A-LIFT.COM | 1-877-4DURALIFT | SALES@DUR-A-LIFT.COM