



DTX2 SERIES

TELESCOPIC AERIAL LIFT
INSULATED OR NON-INSULATED
BOTTOM-MOUNT BASKET!



DTX2-34 PICTURED

SPECIFICATIONS

	DTX2-34	DTX2-32
WORKING HEIGHT	39'	37'
SIDE REACH	25'2"	23'2"
APPROX. STOWED TRAVEL HEIGHT	10'3"	10'3"
HEIGHT TO BOTTOM OF PLATFORM	34'3"	32'3"
BASKET CAPACITY	350#	400#
APPROX. LIFT WEIGHT	2000#	1900#
MAIN BOOM TRAVEL	-25 to 75	-25 to 75
EXTENSION TRAVEL	122.5"	110.5"

Dur-A-Lift Inc. reserves the right to improve models and change specifications without notice or obligation. Dur-A-Lift equipment meets or exceeds all applicable ANSI Standards as of the date of manufacture.

TELESCOPIC, PERSONNEL
 WORKING HEIGHT UP TO 39'
 SIDE REACH UP TO 25'2"
 UP TO 400# BASKET CAPACITY
 180-DEGREE ROTATOR
 BOTTOM-MOUNT BASKET
 COMPACT DESIGN AND STOWING
 INSULATED (DTX2) OR NON-INSULATED (DTX2S)



WE SPEAK BUCKET TRUCK

DUR-A-LIFT.COM/GUIDE

BROWSE ALL MODEL OPTIONS ONLINE!



DTX2 SERIES

STANDARD

CONTROLS: Full pressure proportional controls mounted on the basket for easy access in all boom positions; upper control shut-off provided at the turntable; controls located at the turntable and basket, with deadman at the basket; engine start/stop from the basket

HYDRAULIC SYSTEM: 180° basket rotator; rated pressure is 2200 PSI; operating pressure is 2000 PSI; 4 to 5 GPM pump flow; 10 gallon oil reservoir; open center system; hose connection manifolds in boom.

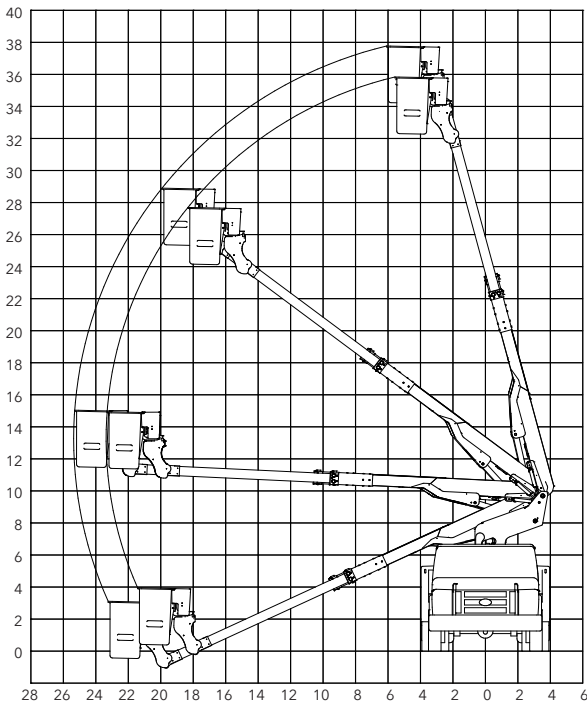
MECHANICAL SYSTEM: Basket leveling by master/slave hydraulic system; rotation by hydraulic driven spur gear with shearball rotation bearing; basket support and boom support

SAFETY FEATURES: Integral holding valves in each cylinder; pressure relief valve; upper boom constructed of fiberglass and rated for work voltages to 46 KV and below; non-conductive hoses provide leveling and control through the insulated boom section

OPTIONAL

Continuous rotation; torsion bar; 12V DC full function backup system; single hand control lever; basket liner; basket and control cover; hydraulic tool circuit at basket and pedestal; hydraulic outriggers; lower boom fiberglass insert

REACH DIAGRAM



CHASSIS REQUIREMENT, MIN.: 14,000 GVWR
CHASSIS CAB TO AXLE REQUIREMENT, MIN.: 84" (DTX2-34); 60" (DTX2-32)



INSULATED OR NON-INSULATED

DTX2: insulated (Category C or D)

DTX2S: non-insulated

BUILT FOR YOU

Ask about available chassis, body, tailshelf, and basket options.

GO GREEN

Clean. Quiet. Powerful.

Available with hybrid aerial operation.



DUR-A-LIFT, INC., 2002 KINGBIRD AVENUE, PO BOX 31, GEORGE, IOWA 51237
1-877-438-7254 | SALES@DUR-A-LIFT.COM | DUR-A-LIFT.COM