

# URBAN FORESTRY

P A C K A G E

# DUR-A-LIFT®



SHOWN: DTAX2-45 AERIAL WITH 9'9" CHIPPER BOX

WWW.DUR-A-LIFT.COM

## SPECIFICATIONS

	DPM2 SERIES	DTAX2 SERIES	
	DPM2-52DP	DTAX2-45	DTAX2-40
WORKING HEIGHT	59'*	50'	45'
SIDE REACH	31'6"	30'	28'
APPROX. STOWED TRAVEL HEIGHT	12'4"	11'3"	11'2"
HEIGHT TO BOTTOM OF PLATFORM	54'	45'	40'
BASKET CAPACITY	600#	350#	400#
APPROX. LIFT WEIGHT	4400#	2585#	2450#
ARTICULATING ARM TRAVEL	0° to 75°	-5° to 81°	-5° to 81°
MAIN BOOM TRAVEL	-30° to 75°	-25° to 75°	-25° to 75°
EXTENSION TRAVEL	120"	122.5"	110.5"

Dur-A-Lift Inc. reserves the right to improve models and change specifications without notice or obligation. Dur-A-Lift equipment meets or exceeds all applicable ANSI Standards as of the date of manufacture.

\*Maximum height achievable with addition of the optional 22" basket elevator.

### DPM2 SERIES

- ADDED REACH & LOAD CAPACITY
- WORKING HEIGHT UP TO 59'; SIDE REACH TO 31'6"
- 11'9" ALUMINUM CHIPPER BOX

### DTAX2 SERIES

- COMPACT UNIT WITH A BIG REACH
- UNDER CDL OPTIONS
- WORKING HEIGHT UP TO 50'; SIDE REACH TO 30'
- 7'6" & 9'9" ALUMINUM CHIPPER BOX OPTIONS

**DUR-A-LIFT®**  
WE SPEAK BUCKET TRUCK

# DPM2

Models: DPM2-52DP

## STANDARD

Proportional controls; lower override controls; engine start/stop from basket; basket access from ground; compensated upper boom; insulated models available in category C or D; hydraulic basket leveling; continuous rotation; joystick and lockout controls; 180° basket rotator; 24"x 42" fiberglass basket, 600# capacity

## OPTIONAL

High electrical resistant controls; outriggers; basket liner for fiberglass baskets; fiberglass main and articulating booms; tool circuits; D.C. backup system; 22" basket elevator; non-insulated versions available (DPM2S); 110 v outlet at basket (non-insulated only)



## CHIPPER BODY FEATURES

Single swing rear gate with robust latch; pruning compartment; superior top ventilation; cross box for pole saws; marine grade aluminum; separate compartment for ropes; shovel & ladder compartment; Oval flashers front and rear; option for additional compartments under chipper body (shown above)

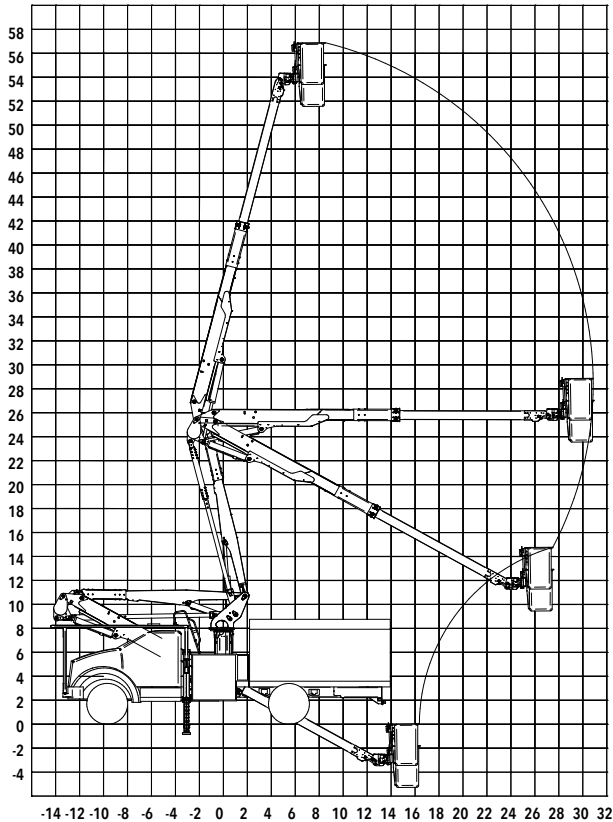
## INSULATED OR NON-INSULATED

The Urban Forestry Package is available in insulated (Cat. C or D) or non-insulated formats. Full pressure controls.

**Insulated:** DPM2-52DP, DTAX2-45, DTAX2-40

**Non-insulated:** DPM2S-52DP, DTAX2S-45, DTAX2S-40

## REACH DIAGRAM



Reach up to 59' with optional basket elevator



DPM2-52DP AERIAL; 33,000 GVWR CHASSIS; 11'9" BODY



# DTAX2

Models: DTAX2-45, DTAX2-40



## STANDARD

**CONTROLS:** Proportional controls; lower controls with override located at the turntable; engine start/stop from the basket; individual control levers

**HYDRAULIC SYSTEM:** Rated pressure is 2200 PSI; operating pressure is 2000 PSI; open center hydraulic system; 180° rotating basket

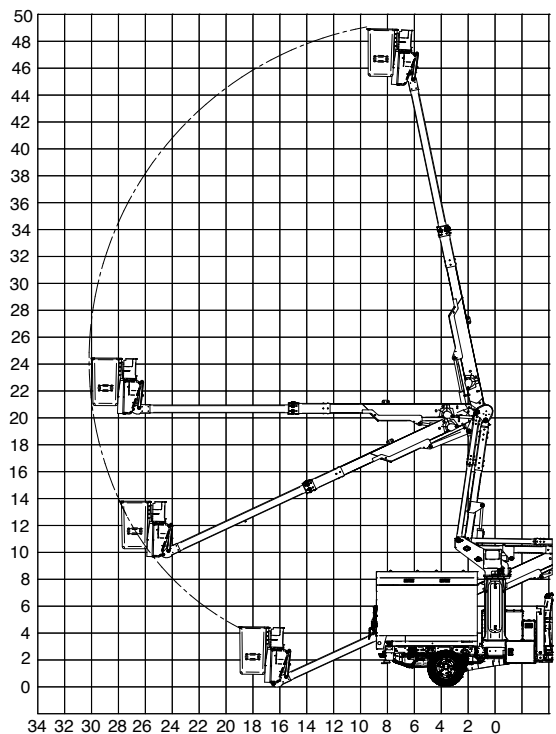
**MECHANICAL SYSTEM:** Telescoping and articulating boom action; offset main boom reduces travel height; shear ball rotation driven; fully enclosed worm gear box; non-continuous rotation; insulated extension boom 46 kV (DTAX2); 24" x 24" basket, 350# capacity; 110V outlet at upper controls (DTAX2S).

## OPTIONAL

Single hand joystick upper control; outrigger or torsion bars; 12 volt DC backup; fixed basket position (side or end); basket offered in various sizes and configurations; basket liner 50 kV (DTAX2); main boom fiberglass insert (DTAX2); chassis isolator art boom fiberglass insert (DTAX2); continuous rotation; tool trays of various sizes; basket and control cover; upper and lower hydraulic tool circuits; lower stow/dump control; special paint color.



## REACH DIAGRAM



END HUNG BASKET CONFIGURATION SHOWN. SUBTRACT 2 FT FOR ACCURATE SIDE REACH VALUE FOR SIDE HUNG BASKET.

# URBAN FORESTRY

P A C K A G E

**DUR-A-LIFT**  
WE SPEAK BUCKET TRUCK

## URBAN FORESTRY PACKAGES

Ask about available aerial, chassis, and chipper body options. Let us build an Urban Forestry truck that's the perfect size for your needs.



	DPM2-52	DTAX2-45		DTAX2-40	
<b>WORKING HEIGHT</b>	59'*	50'	50'	45'	45'
<b>CHASSIS, CLASS REQ.</b>	Class 6	Class 6	Class 5+	Class 6	Class 5+
<b>CHIPPER BODY LENGTH</b>	11'9"	9'9"	7'6"	9'9"	7'6"

\*With optional basket elevator



**CHIPPER BODY DIMENSIONS: 11'9" (L) X 96" (W) 54" (H)**



**CHIPPER BODY DIMENSIONS: 9'9" (L) X 96" (W) 54" (H)**



**CHIPPER BODY DIMENSIONS: 7'6" (L) X 96" (W) 54" (H)**



### EASY UNLOAD

The Urban Forestry bucket trucks feature a scissor hoist for quick and easy unloading.



READ MORE



WWW.DUR-A-LIFT.COM