

DUR-A-LIFT®

DVT-29

TELESCOPIC AERIAL LIFT
MOUNTED ON A TRANSIT CARGO VAN
UNDER 10,000 LB. GVWR!



DVT-29 AERIAL LIFT VAN

SPECIFICATIONS

DVT-29

WORKING HEIGHT	34'
SIDE REACH	21'2"
APPROX. STOWED TRAVEL HEIGHT	9'6"
HEIGHT TO BOTTOM OF PLATFORM	29'
BASKET CAPACITY	350#
APPROX. LIFT WEIGHT	1650#
BOOM TRAVEL	-7° to 80°
EXTENSION TRAVEL	108"

Dur-A-Lift Inc. reserves the right to improve models and change specifications without notice or obligation. Dur-A-Lift equipment meets or exceeds all applicable ANSI Standards as of the date of manufacture.

WORKING HEIGHT UP TO 34'; SIDE REACH TO 21'
SINGLE-PERSON FIBERGLASS BASKET
WALK-IN & SPLICER BASKET OPTIONS
LOTS OF STORAGE OPTIONS



WE SPEAK BUCKET TRUCK

[DUR-A-LIFT.COM/GUIDE](https://dur-a-lift.com/guide)

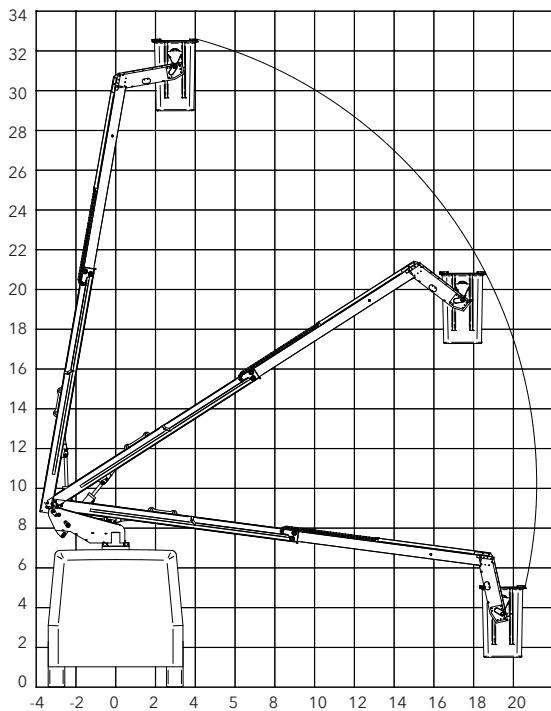
BROWSE ALL MODEL OPTIONS ONLINE!



DVT-29



REACH DIAGRAM



CHASSIS REQUIREMENT: FORD TRANSIT 350 CARGO, LOW ROOF, 148" WHEELBASE. 9500 GVWR



READ MORE

STANDARD

Adjustable wear blocks on main boom; 110V outlet basket; environmentally sealed toggle switches; greaseless bearings; 370° non-continuous rotation; electric over hydraulic controls; Upper/lower controls with lower override; maximum operating pressure of 2,250 PSI; 5"x7" rectangular steel main boom; 4"x6" rectangular aluminum extension boom

OPTIONAL

Hydraulic basket leveling with trim switch at basket; walk-in basket; full function DC backup; lower remote controls; lower hydraulic basket stow/dump; lower start/stop; electric joystick; tail shelf; basket cover; tool tray; basket heater; fold down seat; splicers basket; battery power; fan belt clutch pump power.



DUR-A-LIFT, INC., 2002 KINGBIRD AVENUE, PO BOX 31, GEORGE, IOWA 51237
1-877-438-7254 | SALES@DUR-A-LIFT.COM | DUR-A-LIFT.COM