

DT2 SERIES

Models: DT2-31, DT2-29

DUR-A-LIFT®



DTS-29 PICTURED

SPECIFICATIONS

	DT2-31	DT2-29
WORKING HEIGHT	36'	34'
SIDE REACH (SIDE HUNG)	22'8"	20'8"
SIDE REACH (END HUNG)	24'6"	22'6"
APPROX. STOWED TRAVEL HEIGHT	10'6"	10'6"
HEIGHT TO BOTTOM OF PLATFORM	31'	29'
BASKET CAPACITY	350#	400#
APPROX. LIFT WEIGHT	1950#	1850#
MAIN BOOM TRAVEL	-25 to 75	-25 to 75
EXTENSION TRAVEL	122.5"	110.5"

Dur-A-Lift Inc. reserves the right to improve models and change specifications without notice or obligation. Dur-A-Lift equipment meets or exceeds all applicable ANSI Standards as of the date of manufacture.

- TELESCOPIC, PERSONNEL
- WORKING HEIGHT UP TO 36'
- SIDE REACH UP TO 29'6"
- UP TO 400# BASKET CAPACITY
- END OR SIDE-HUNG BASKET
- COMPACT DESIGN AND STOWING
- OPTIONS AVAILABLE FOR USE WITH A 9' BODY
- INSULATED (DT2) OR NON-INSULATED (DT2S)

MANY WAYS TO CUSTOMIZE!

DUR-A-LIFT®
WE SPEAK BUCKET TRUCK

DT2 SERIES

Models: DT2-31, DT2-29

DUR-A-LIFT
WE SPEAK BUCKET TRUCK

STANDARD

CONTROLS: Proportional controls; non-proportional controls (DT2S TS); lower controls with override; engine start/stop from the basket; individual control levers

HYDRAULIC SYSTEM: Rated pressure is 2200 PSI; operating pressure is 2000 PSI; open center hydraulic system

MECHANICAL SYSTEM: Telescoping boom action; offset main boom reduces travel height; shear ball rotation driven; fully enclosed worm gear box; non-continuous rotation; insulated extension boom (DT2); 24"x24"x42" basket; side hung basket

OPTIONAL

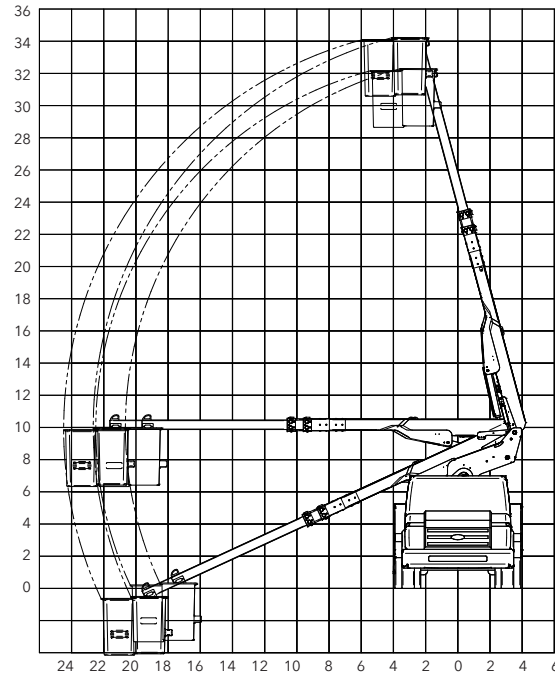
Single hand joystick upper control; outrigger or torsion bars; 12v D.C. backup; end hung basket; basket offered in various sizes and configurations; basket liner (DT2); basket cover; continuous rotation (FP); tool trays of various sizes; tool circuits; tail shelf with walkup steps; main boom fiberglass insert (DT2); paint color; insulated option available (DT2S)

INSULATED OR NON-INSULATED

DT2: insulated (full pressure controls only; Category D)

DT2S: non-insulated (drive/battery, two speed or full pressure controls)

REACH DIAGRAM



CHASSIS REQUIREMENT, MIN.: 14,000 GVWR
CHASSIS CAB TO AXLE REQUIREMENT, MIN.: 84" (DT2-31); 60" (DT2-29)



WWW.DUR-A-LIFT.COM



BUILT FOR YOU

Ask about available chassis, body, tailshelf, and basket options.

GO GREEN Clean. Quiet. Powerful.

Available with hybrid aerial operation. +
++
+++

DUR-A-LIFT, INC., 2002 KINGBIRD AVENUE, PO BOX 31, GEORGE, IOWA 51237
WWW.DUR-A-LIFT.COM | 1-877-4DURALIFT | SALES@DUR-A-LIFT.COM