



DT2 SERIES

TELESCOPIC AERIAL LIFT
INSULATED OR NON-INSULATED
COMPACT DESIGN AND STOWING!



DTS-29 PICTURED

SPECIFICATIONS

	DT2-31	DT2-29
WORKING HEIGHT	36'	34'
SIDE REACH (SIDE HUNG)	22'8"	20'8"
SIDE REACH (END HUNG)	24'6"	22'6"
APPROX. STOWED TRAVEL HEIGHT	10'6"	10'6"
HEIGHT TO BOTTOM OF PLATFORM	31'	29'
BASKET CAPACITY	350#	400#
APPROX. LIFT WEIGHT	1950#	1850#
MAIN BOOM TRAVEL	-25 to 75	-25 to 75
EXTENSION TRAVEL	122.5"	110.5"

Dur-A-Lift Inc. reserves the right to improve models and change specifications without notice or obligation. Dur-A-Lift equipment meets or exceeds all applicable ANSI Standards as of the date of manufacture.

TELESCOPIC, PERSONNEL
WORKING HEIGHT UP TO 36'
SIDE REACH UP TO 29'6"
UP TO 400# BASKET CAPACITY
END OR SIDE-HUNG BASKET
COMPACT DESIGN AND STOWING
OPTIONS AVAILABLE FOR USE WITH A 9' BODY
INSULATED (DT2) OR NON-INSULATED (DT2S)



WE SPEAK BUCKET TRUCK

DUR-A-LIFT.COM/GUIDE

BROWSE ALL MODEL OPTIONS ONLINE!



DT2 SERIES

STANDARD

CONTROLS: Proportional controls; non-proportional controls (DT2S TS); lower controls with override; engine start/stop from the basket; individual control levers

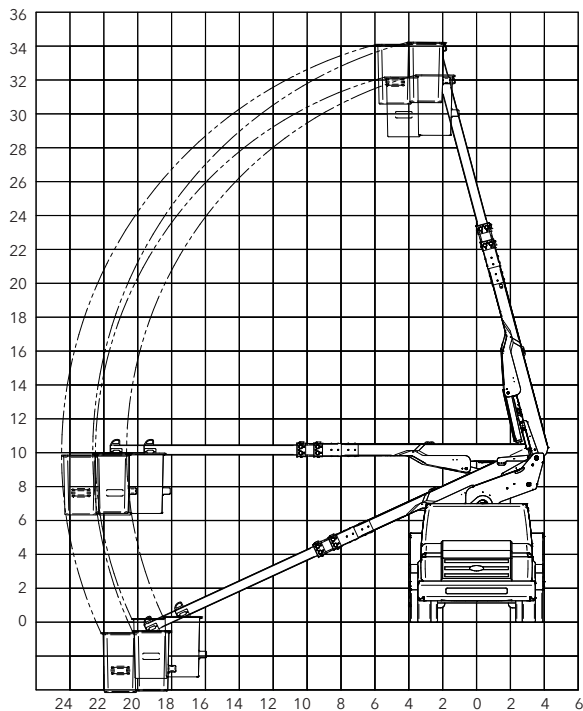
HYDRAULIC SYSTEM: Rated pressure is 2200 PSI; operating pressure is 2000 PSI; open center hydraulic system

MECHANICAL SYSTEM: Telescoping boom action; offset main boom reduces travel height; shear ball rotation driven; fully enclosed worm gear box; non-continuous rotation; insulated extension boom (DT2); 24"x24"x42" basket; side hung basket

OPTIONAL

Single hand joystick upper control; outrigger or torsion bars; 12v D.C. backup; end hung basket; basket offered in various sizes and configurations; basket liner (DT2); basket cover; continuous rotation (FP); tool trays of various sizes; tool circuits; tail shelf with walkup steps; main boom fiberglass insert (DT2); paint color; insulated option available (DT2S)

REACH DIAGRAM



CHASSIS REQUIREMENT, MIN.: 14,000 GVWR
CHASSIS CAB TO AXLE REQUIREMENT, MIN.: 84" (DT2-31); 60" (DT2-29)



BUILT FOR YOU
Ask about available chassis, body, tailshelf, and basket options.

GO GREEN
Clean. Quiet. Powerful.
Available with hybrid aerial operation.

INSULATED OR NON-INSULATED

DT2: insulated (full pressure controls only; Category D)

DT2S: non-insulated (drive/battery, two speed or full pressure controls)



DUR-A-LIFT, INC., 2002 KINGBIRD AVENUE, PO BOX 31, GEORGE, IOWA 51237
1-877-438-7254 | SALES@DUR-A-LIFT.COM | DUR-A-LIFT.COM